



Exploring the Baraggia

A unique and fascinating environment, the **Baraggia**, in addition to representing one of the last and most significant examples of prairies in the Po Valley, is a territory strongly linked to the cultivation of rice, which is being produced here since the 17th century. With this itinerary, that crosses the area that extends between **Buronzio** and **Gattinara**, you will discover the Vercelli's Baraggia, where among plateaus, rice fields, and the remnants of the last "Savannah of Italy" surprising treasures are hidden. A wonderful journey through ancient fortifications and small farming villages, in the heart of the land where the first and only **Italian PDO rice** was born.

Farms and rice mills

To learn more about its cultivation and to buy some of our best qualities of rice, your best option is to visit a farm or a rice mill. Discover the list of farms and rice mills available for visits along the Baraggia on www.atlvalsesiavercelli.it



Cyclable rice paddies

Discovering Vercelli's rice fields by bicycle is the best way to explore this land: ancient farmsteads, ingenious hydraulic works and places that offer unique and different scenarios in every season. Discover all the cyclable rice paddies itineraries on www.atlvalsesiavercelli.it



Stampa: Industria Grafica Borgosesia - Progetto Grafico: www.enesi.it - Materiale fotografico: Archivio ATL Biella Valsesia Vercelli - Donatello Lorenzo



HOW TO REACH THE BARAGGIA

VERCELLI

- SP230 to Biella. SP6 to Buronzo
- A26 GENOVA - GRAVELLONA T.**
A4 highway to Torino.
Exit Balocco. SP6 to Buronzo
- A4 MILANO – TORINO**
Exit Balocco. SP6 to Buronzo

ATL BIELLA VALSESIA VERCELLI

Viale Garibaldi 96 -Vercelli
e-mail: infovercelli@atlvalsesiavercelli.it
Tel. (+39) 0161 58002

Find out more:



www.atlvalsesiavercelli.it - #discovervalsesiavercelli



atlvalsesiavercelli.it

EXPLORING THE BARAGGIA

Rice, Nature and Castles



1 BARAGGE NATURE RESERVE

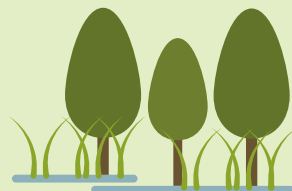
Created to safeguard the last strips of intact Baraggia, the **Baragge Nature Reserve** aims to protect and conserve this particular environment, which at times resembles the **African Savannah**. The reserve is made up of six distinct portions of land, which in the Vercelli area are located between Rovasenda, Roasio, Gattinara and Lenta. Very interesting from a landscape point of view, especially in autumn and summer when it offers spectacular views, the Baraggia is an ideal destination for **hiking and nature enthusiasts**.



2 BURONZO

The capital of Baraggia is a small and charming village that preserves a unique fortified complex: the **consortium**. Consisting of seven castles, the old town appears almost like a scenic space, with many charming views, overlooked by buildings that preserve elements of different eras, such as medieval slits, 18th century facades, and colorful mosaics. Not to be missed,

going up along the fascinating **via Castello**, the enchanting view of the rice fields below and the **Monte Rosa** mountain range.



LEGEND

- 1 Baragge Nature Reserve
- 2 Buronzo
- 3 Rovasenda
- 4 Lenta

 Historical sites

 Natural sites

 Churches

 Castles/Towers

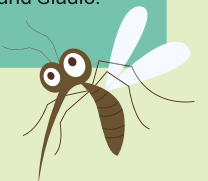
3 ROVASENDA

Located in the center of Baraggia, this small agricultural village hosts a beautiful **medieval castle** dating back to 1170, with an enchanting 48 meters high tower, one of the most fascinating and best-preserved in the Vercelli area. A few hundred meters away from the ancient Castle is located the **new Castle of Rovasenda**. The castle remarkably similar to the pre-existing one, was built at the beginning of the 20th century and was commissioned by Count Luigi di Rovasenda, who decided

to build one for himself since he was unable to inherit the original Castle.

BARAGGIA RICE PDO

In the lands of Baraggia is cultivated the **first and only PDO rice** in Italy: "**Riso di Baraggia Biellese e Vercellese**". As specified in the processing specifications, 28 municipalities, located in the provinces of Biella and Vercelli, form the area included in the production of PDO rice. The varieties of PDO rice are seven: Arborio, Baldo, Balilla, Carnaroli, S. Andrea, Loto and Gladio.



ITINERARIES IN RICE FIELD

4 LENTA

Near to Rovasenda you can visit **Lenta**, a small agricultural village remarkably interesting from a historical, archaeological, and architectural point of view. The urban plan, halfway between a "ricetto" (fortified refuge) and a castle, defines the village as a "**religious fortified refuge**" of sorts. Sites not to be missed: the castle and the ruins of the ancient Fortified Refuge (Ricetto); the Parish of Sant'Olimpio, boasting the beautiful crypt of San Biagio; the **Parish Church of Santo Stefano**, founded in the 5th century and rich in frescoes.

